

HOME COMFORT



THE COCOONING FLOOR



GREATER THICKNESS for a better...

- Underfoot comfort
- Sound insulation
- Thermal insulation





1889 - Emporio Biondo



1



2

1-Tweed Cream

(pureclean matt)

2m - Code: 1334 1632 - EAN: 3475710290145

4m - Code: 1504 1632 - EAN: 3475710268885

2-Fado Perla

(pureclean grain)

2m - Code: 1257 1897 - EAN: 3475710340093

4m - Code: 1627 1897 - EAN: 3475710337376

3-Madras White

(pureclean grain)

2m - Code: 1257 1479 - EAN: 3475710340116

4m - Code: 1627 1479 - EAN: 3475710337413



3



4



5



6



7



8



9



10



11

4-Emporio Late (pureclean grain)

2m - Code: 1257 1888 - EAN: 3475710336485
4m - Code: 1627 1888 - EAN: 3475710336515

5-Keywest Blanc (pureclean grain)

2m - Code: 1257 1536 - EAN: 3475710340123
4m - Code: 1627 1536 - EAN: 3475710337611

6-Vogue Nacre (pureclean matt)

2m - Code: 1334 1906 - EAN: 3475710339998
4m - Code: 1504 1906 - EAN: 3475710337468

7-Vogue Crema (pureclean matt)

2m - Code: 1334 1904 - EAN: 3475710339981
4m - Code: 1504 1904 - EAN: 3475710337444

8-Fisherman Washed (pureclean grain)

2m - Code: 1257 1728 - EAN: 3475710340086
4m - Code: 1627 1728 - EAN: 3475710337369

9-Broadway White (pureclean grain)

2m - Code: 1257 1606 - EAN: 3475710339790
4m - Code: 1627 1606 - EAN: 3475710339783

10-Emporio Biondo (pureclean grain)

2m - Code: 1257 1889 - EAN: 3475710336492
4m - Code: 1627 1889 - EAN: 3475710336522

11-Morani Late (pureclean grain)

2m - Code: 1257 1930 - EAN: 3475710345005
4m - Code: 1627 1930 - EAN: 3475710341793





3



4



5



6



7



8

1-Fado Azul (pureclean grain)

2m - Code: 1257 1895 - EAN: 3475710340048
4m - Code: 1627 1895 - EAN: 3475710337314

2-Fisherman Ocean (pureclean grain)

2m - Code: 1257 1667 - EAN: 3475710340031
4m - Code: 1627 1667 - EAN: 3475710337307

3-Timber Perle (pureclean grain)

2m - Code: 1257 1750 - EAN: 3475710340055
4m - Code: 1627 1750 - EAN: 3475710337338

4-Morani Perle (pureclean grain)

2m - Code: 1257 1931 - EAN: 3475710345012
4m - Code: 1627 1931 - EAN: 3475710341809

5-Vogue Argento (pureclean matt)

2m - Code: 1334 1903 - EAN: 3475710339974
4m - Code: 1504 1903 - EAN: 3475710337437

6-Emporio Perla (pureclean grain)

2m - Code: 1257 1844 - EAN: 3475710340017
4m - Code: 1627 1844 - EAN: 3475710337915

7-Keywest Gris (pureclean grain)

2m - Code: 1257 1539 - EAN: 3475710340130
4m - Code: 1627 1539 - EAN: 3475710337628

8-Keywest Clear (pureclean grain)

2 m - Code: 1257 1636 - EAN: 3475710340024
4m - Code: 1627 1636 - EAN: 3475710337758

1-Newport Pecan

(pureclean grain)

2m - Code: 1257 1538 - EAN: 3475710306730

4m - Code: 1627 1538 - EAN: 3475710306631

2-Tweed Brown

(pureclean matt)

2m - Code: 1334 1634 - EAN: 3475710290169

4m - Code: 1504 1634 - EAN: 3475710268908

3-Madras Taupe

(pureclean grain)

2m - Code: 1257 1319 - EAN: 3475710340109

4m - Code: 1627 1319 - EAN: 3475710337406



1319 - Madras Taupe



1



2



3



1



2



3



1556 - Newport Honey

1-Emporio Natura

(pureclean grain)

2m - Code: 1257 1809 - EAN: 3475710322303

4m - Code: 1627 1809 - EAN: 3475710320095

2-Newport Naturel

(pureclean grain)

2m - Code: 1257 1557 - EAN: 3475710306662

3m - Code: 1527 1557 - EAN: 3475710307164

4m - Code: 1627 1557 - EAN: 3475710306587

3-Newport Honey

(pureclean grain)

2m - Code: 1257 1556 - EAN: 3475710306655

3m - Code: 1527 1556 - EAN: 3475710307157

4m - Code: 1627 1556 - EAN: 3475710306570

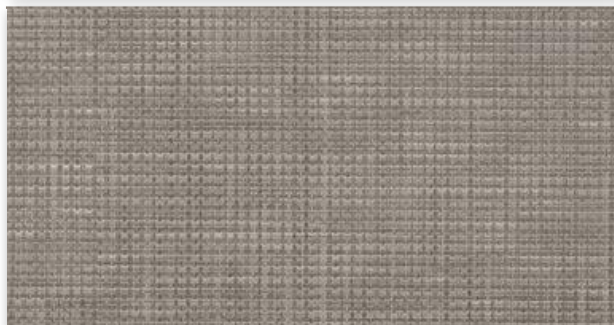




1



2



3



4



5



6



1-Living Light Grey (pureclean matt)

2m - Code: 1334 1554 - EAN: 3475710251931

3m - Code: 1604 1554 - EAN: 3475710260070

4m - Code: 1504 1554 - EAN: 3475710251818

2-Tweed Grey (pureclean matt)

2m - Code: 1334 1633 - EAN: 3475710290152

4m - Code: 1504 1633 - EAN: 3475710268892

3-Broadway Storm (pureclean grain)

2m - Code: 1257 1595 - EAN: 3475710340079

4m - Code: 1627 1595 - EAN: 3475710337352

4-Madras Cloud (pureclean grain)

2m - Code: 1257 1465 - EAN: 3475710340062

4m - Code: 1627 1465 - EAN: 3475710337345

5-Emporio Grigio

(pureclean grain)

2m - Code: 1257 1890 - EAN: 3475710336508

4m - Code: 1627 1890 - EAN: 3475710336539

6-Living Anthracite (pureclean matt)

2m - Code: 1334 1537 - EAN: 3475710261718

4m - Code: 1504 1537 - EAN: 3475710229572



TECHNICAL CHARACTERISTICS

Home Comfort

Total thickness	EN 428	mm	4
Thickness of the wear-layer	EN 429	mm	0.35
Weight / Mass per unit area	EN 430	g/sqm	2440
Width of sheet	EN 426	m	2 / 3 / 4
Length of sheet	EN 426	ml	± 20
Surface treatment	-	-	Pureclean
Norm / Product specification	-	-	EN 653
European classification	EN 685	class	23/31
Fire rating - Classification	EN 13501-1	class	C _{fl} -s1
Wear group	EN 653	group	T
TVOC rate 28 days	-	µg/m ³	< 250
French norm	-	-	A+
Impact sound insulation	EN ISO 717/2	dB	20
Room impact noise	NF S 31074	class	A
Slip resistance wet: ramp test with oil	DIN 51 130	class	R10
Dimensional stability after exposure to heat	EN 434	%	0.05
Residual indentation	EN 433	mm	< 0.40
Thermal conductivity	EN 12 524	W/(m.k)	0.25
Colour fastness	EN 20 105-B02	degree	> 6
Wet rooms	-	-	OK
Floor heating	-	-	OK - T < 28°C
Static electrical probersity	NF EN 1815	kV	≤ 2
Guarantee		year	15

CE MARKING



EN 14041



Areas of use: domestic use





HOME COMFORT GREATER THICKNESS FOR A BETTER ...



Underfoot comfort

Sound insulation

Thermal insulation

Ecological material



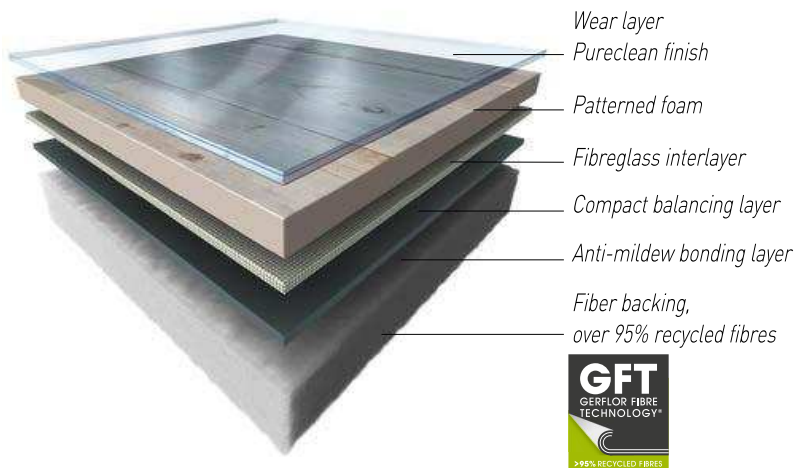
HEALTH

- Formaldehyde-free
- Lead-free, no heavy metals
- Solvent-free
- No harmful plasticizer
- Low VOC emission
- No glue
- GFT backing: 95% recycled fibres

ENVIRONMENT

- 100% recyclable
- ISO 14001
- Soapy water cleaning

Laying video



LAYING

Laying recommendation: Gerflor floor coverings are high quality products developed to last. No warranty can be claimed unless the product has been laid according to the following specifications:

The subfloor must be smooth, hard, dry and clean.

Unroll the floor covering 24 hours before it is due to be installed.

The floor covering should not be laid in rooms where the temperature is below 15°C.

Although Home Comfort is resistant to subfloor moisture we recommend that the floor construction should contain a Damp Proof Membrane.

Can be installed on underfloor heating (up to 28°C).

Cold-weld the joints for perfect water-tightness.

Permanent laying: Use a single stick acrylic glue (approximately 250g/sqm) and a finely notched trowel and cold weld the joints.

Loose laying: Use double sided tape or hook & loop strips around the edges and along the joints for a perfect and invisible fit.

RENOVATION: Thanks to its special patented composition, Home Comfort can be laid directly on most existing subfloors using loose laying.

On wooden floorboards and on ceramic tiles: Home Comfort can be laid directly without any subfloor preparation. No levelling compound (finishing) needs to be applied even if there are open joints:

- up to 5 mm wide and a maximum depth of 1 mm in existing tiling
- up to 3 mm wide in wood flooring.

On textile carpeting (felt or needle punch): Home Comfort can be installed directly over the existing carpeting as it has excellent resistance to indentation.

On concrete: Home Comfort can be installed loose-laid or semi-permanently without any special surface preparation. Use double-sided tape along the edges of the room. A rough concrete surface should be treated with a smoothing compound beforehand.

CLEANING & CARE

Initial cleaning: Before commencing a regular maintenance programme, initial cleaning of the floor will be necessary to remove dirt accumulated during laying and other building works. Remove debris, sweep floor and vacuum to remove loose dirt. Wash floor with damp mop and using cold water and neutral detergent. Replace the water and solution if necessary. Remove stubborn marks with a non-abrasive pad.

Maintenance: Remove loose dirt with a broom or vacuum cleaner. Wash floor with damp mop and used cold water.

Cleaning: Frequency of periodic maintenance will depend on the amount of traffic and on the type of laying. Wash floor with damp mop using cold water and neutral detergent.

Discoloration: Discolouration can occur in any resilient floor covering if it comes into contact with pigment-containing substances such as bituminous materials, mastic, asphalt, oil, shoes with black rubber soles, or rubber rollers may cause discoloration.